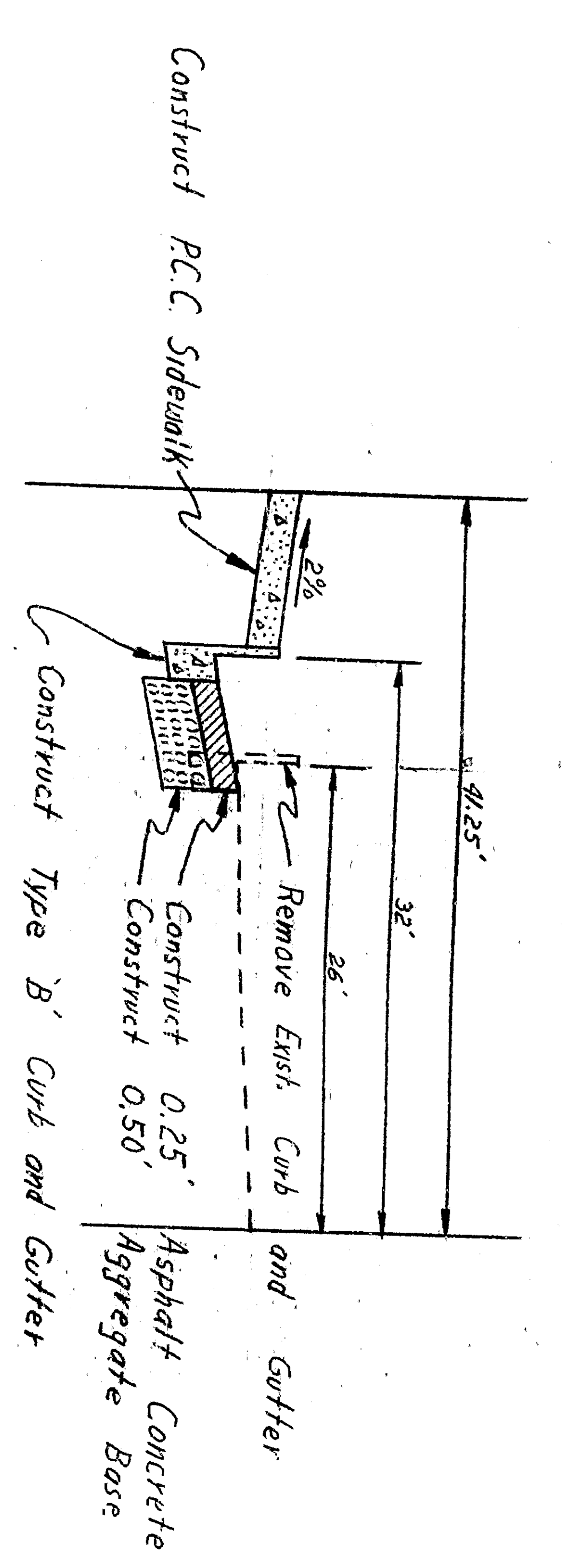
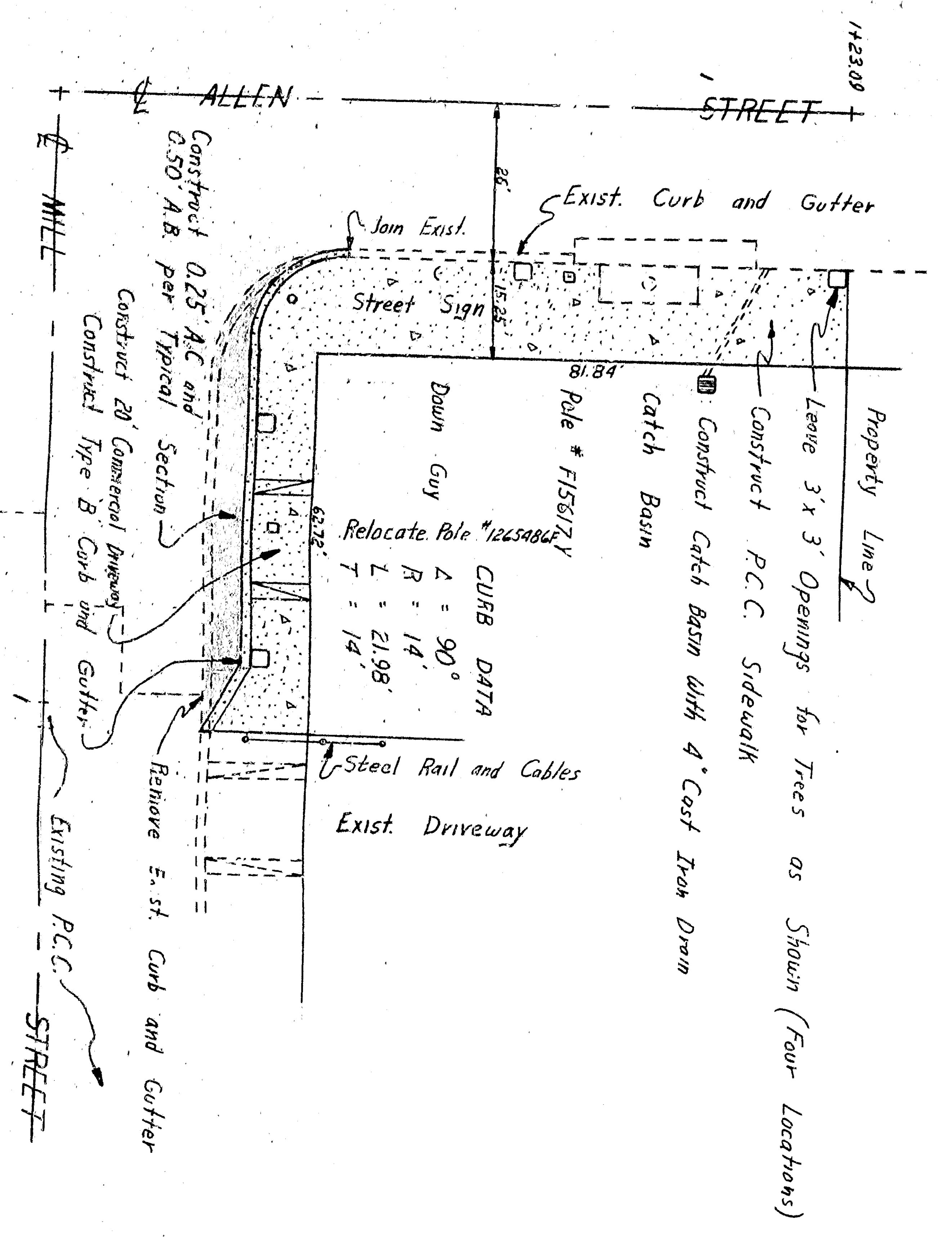
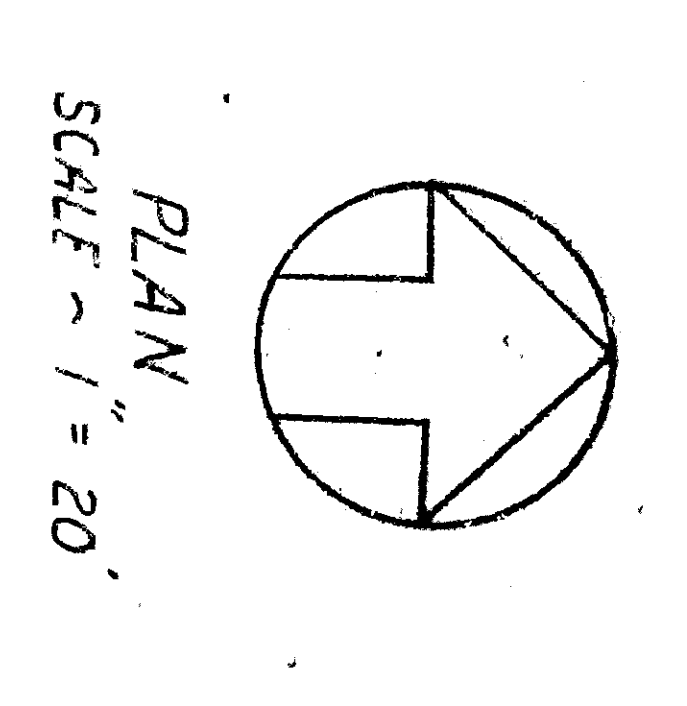


**GENERAL NOTES**

- 1 All work indicated on these plans shall be done in conformity with applicable provisions of Standard Specifications No. 227 and Standard Drawings No. 232, on file in the Office of the City Engineer.
- 2 Overlay existing pavement with asphalt concrete as required to provide smooth driving surface.
- 3 All surface drainage shall be directed to catch basin and located under sidewalk to gutter to be dumped over City Sidewalk.

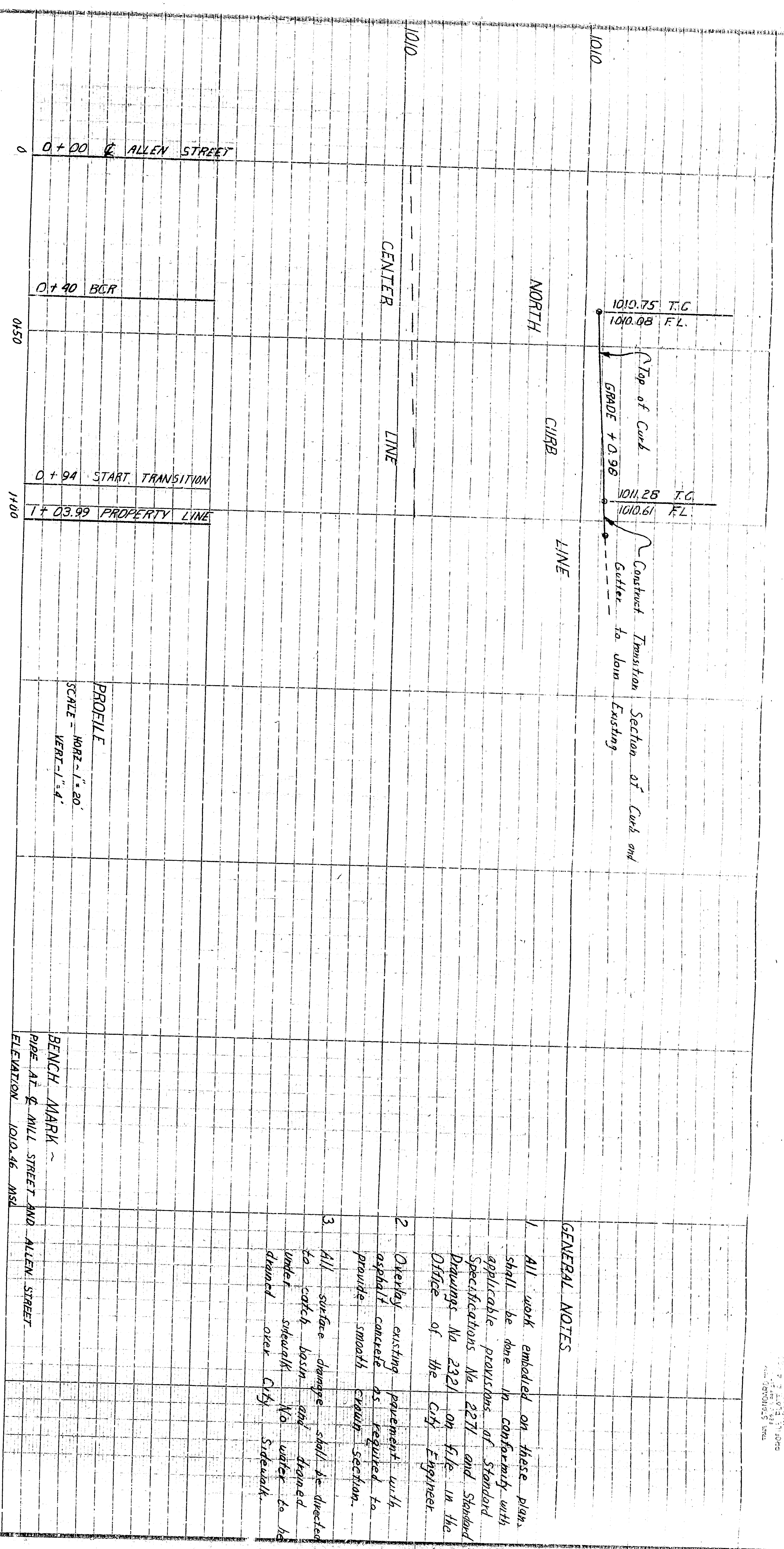


TYPICAL SECTION - MILL STREET  
SCALE HORIZ - 1" = 10'  
VERT - 1" = 2'



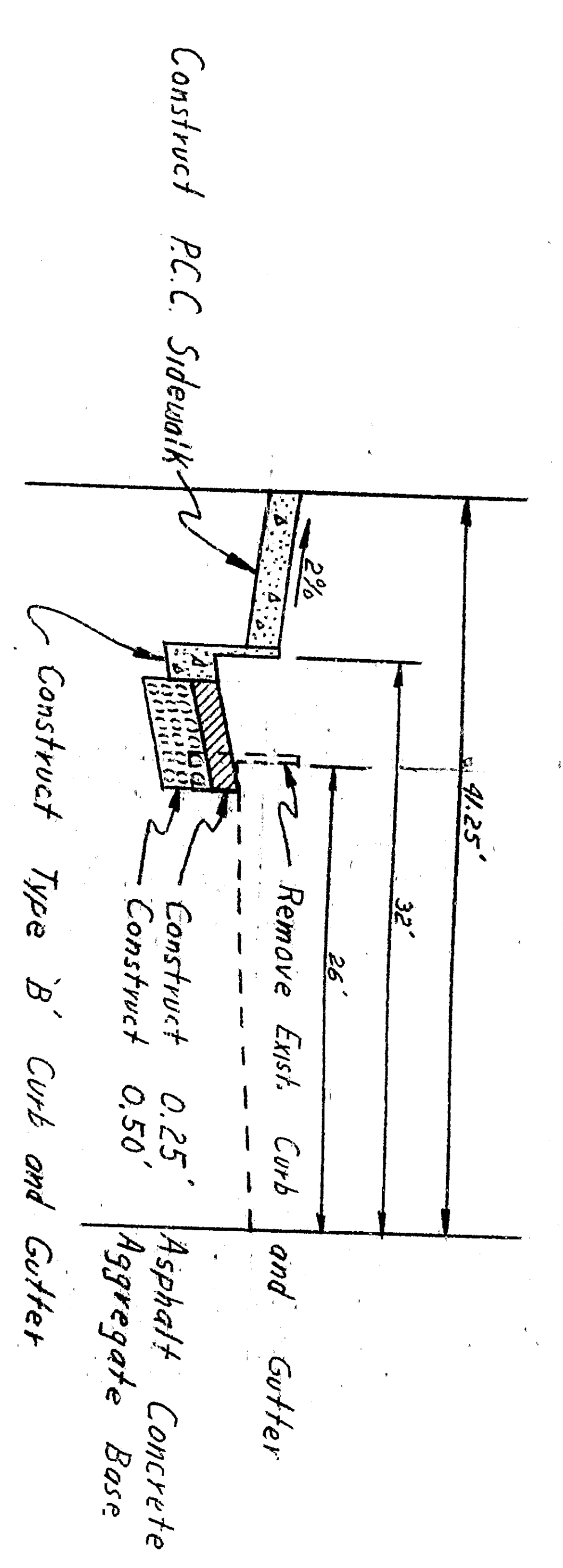
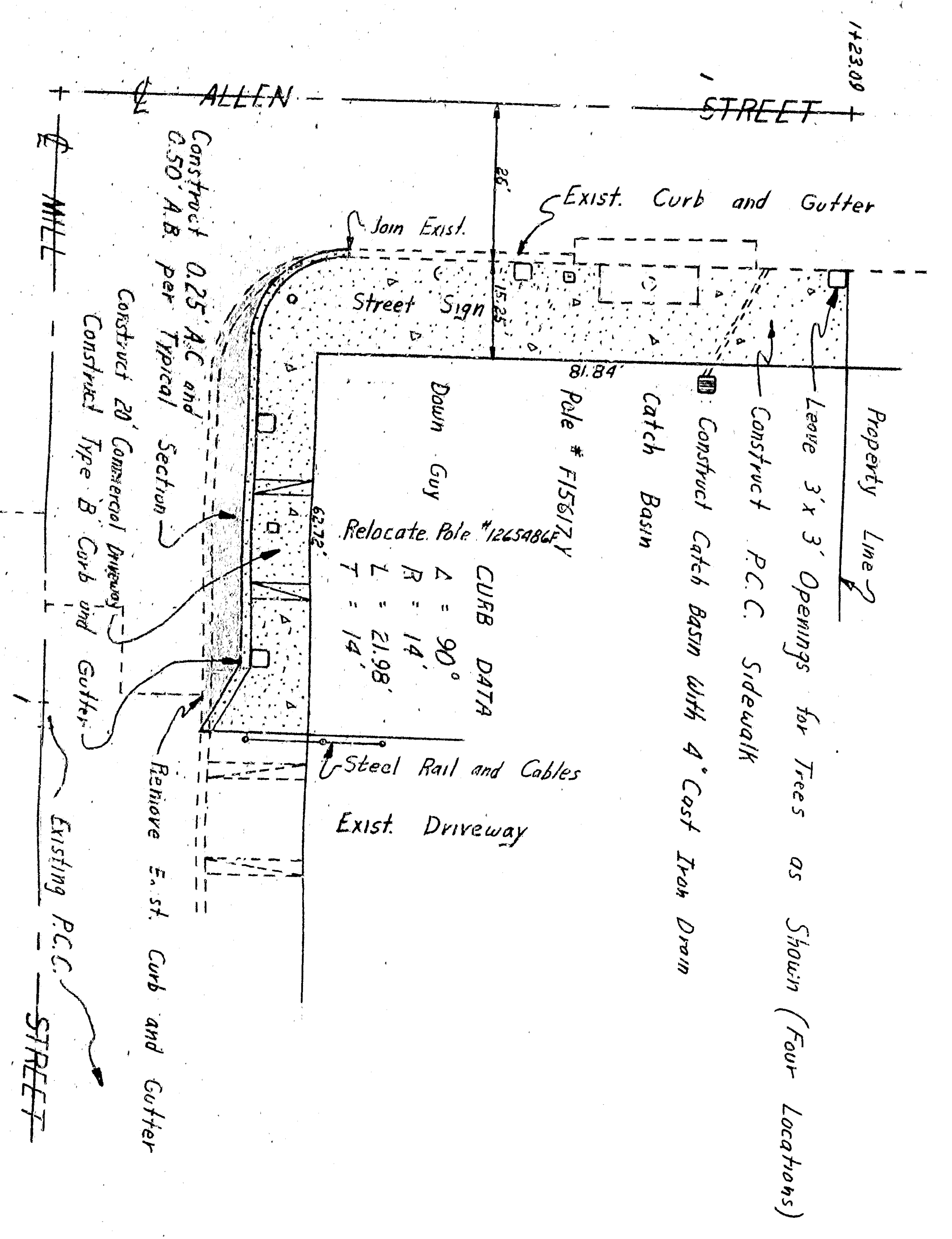
PLAN  
SCALE - 1" = 20'

APPROVED	3-9	1967
DESIGNED BY	W. M. HARRIS	
DRAWN BY	F. ROGER	
CHECKED BY	T. B. ROBERTSON	
RECOMMENDED BY		
DEPARTMENT OF ENGINEERING CITY OF SAN BERNARDINO IMPROVEMENT PLAN NORTHEAST CORNER OF MILL AND ALLEN ST.		

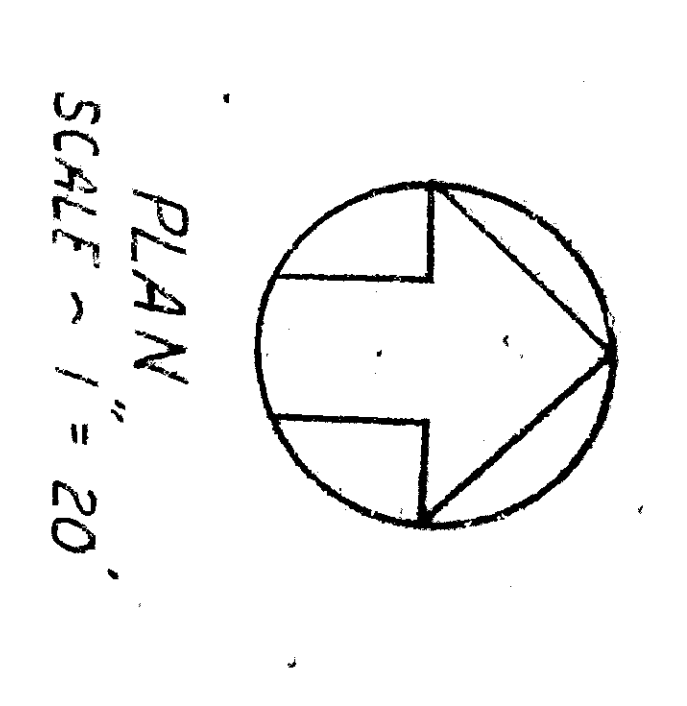


**GENERAL NOTES**

- 1 All work indicated on these plans shall be done in conformity with applicable provisions of Standard Specifications No. 227 and Standard Drawings No. 232, on file in the Office of the City Engineer.
- 2 Overlay existing pavement with asphalt concrete as required to provide smooth driving surface.
- 3 All surface drainage shall be directed to catch basin and located under sidewalk to gutter to be dumped over City Sidewalk.



TYPICAL SECTION - MILL STREET  
SCALE HORIZ - 1" = 10'  
VERT - 1" = 2'



PLAN  
SCALE - 1" = 20'

APPROVED	3-9	1985
DESIGNED BY	Q. N. M. HARRIS	
DRAWN BY	F. ROGER	
CHECKED BY	T. B.	
RECOMMENDED BY	T. B.	
DEPARTMENT OF ENGINEERING CITY OF SAN BERNARDINO IMPROVEMENT PLAN NORTHEAST CORNER OF MILL AND ALLEN ST.		